

Public Document Pack

CABINET

MONDAY 18 NOVEMBER 2013

10.00 AM

Bourges/Viersen Room - Town Hall

Contact – Alexander.daynes@peterborough.gov.uk, 01733 452447

AGENDA

	Page No
1 Apologies for Absence	
2 Declarations of Interest	
3 Minutes of Cabinet Meeting - 4 November 2013	3 - 6
STRATEGIC DECISIONS	
4 Early Years Services Including Children's Centres	7 - 36

Circulation

Cabinet Members

Scrutiny Committee Representatives

Directors, Heads of Service

Press

*Any agenda item highlighted in bold and marked with an * is a 'key decision' involving the Council making expenditure or savings of over £500,000 or having a significant effect on two or more wards in Peterborough. These items have been advertised previously on the Council's Forward Plan (except where the issue is urgent in accordance with Section 15 of the Council's Access to Information rules).*



There is an induction hearing loop system available in all meeting rooms. Some of the systems are infra-red operated, if you wish to use this system then please contact Alex Daynes on 01733 452447 as soon as possible.

This page is intentionally left blank

MINUTES OF CABINET MEETING HELD 4 NOVEMBER 2013

PRESENT

Cabinet Members: Councillor Cereste (chair), Councillor Holdich, Councillor North, Councillor Scott, Councillor Seaton and Councillor Walsh.

Cabinet Advisers: Councillor Casey, Councillor Dalton, Councillor Goodwin and Councillor Todd.

1. APOLOGIES FOR ABSENCE

Apologies were received from Councillors Elsey and Fitzgerald.

2. DECLARATIONS OF INTEREST

No declarations of interest were received.

3. MINUTES OF THE MEETINGS HELD 23 SEPTEMBER 2013

The minutes of the meeting held on 23 September 2013 were agreed as an accurate record.

STRATEGIC DECISIONS

4. PETERBOROUGH CITY CENTRE DEVELOPMENT PLAN DOCUMENT

Cabinet received a report following approval of the Consultation Draft version of the City Centre DPD (from now on referred to as the City Centre Plan) on 10 December 2012, and following public consultation and further evidence gathering since that date.

Councillor Cereste introduced the report highlighting the importance of a vibrant city centre for the city in general.

Cabinet debated the Plan and report and comments included:

- Some rewording should be made to the document to include all disability groups and organisations;
- The need for adequate tourist coach and bus drop off and pick up areas should be addressed in the document; and
- Transport options for cultural activities could be addressed in future.

Cabinet considered the report and **RESOLVED** to:

Recommend the Peterborough City Centre DPD (Proposed Submission Version) to Council for approval for the purposes of public consultation and submission to the Secretary of State, subject to the following amendments:

- i) References to 'disability forums' to be amended to 'disability forums and other disability organisations';

- ii) Page 72 of the Development Plan Document, implementation detail for Policy CC1 to include 'and accessibility issues for disabled'; and
- iii) Ensure the provision of drop off and pick up areas for coaches and buses by including the following wording at 6.1.20 of the DPD:
"The council will encourage provision of coach parking facilities to attract visitors to the city centre. Within the Opportunities Areas where there is a mix of uses including leisure (D2) the developer will be required to provide coach or bus parking spaces as set out in Appendix A (PP13) of the Planning Policies DPD. Individual parking requirements will be assessed for each application based on the mix of uses proposed."

REASONS FOR THE DECISION

Cabinet was recommended to approve the City Centre Plan (Proposed Submission version) for public consultation and submission. This was because it would help deliver the city's growth targets set out in the Core Strategy, it would help to encourage and coordinate further investment in the city centre and the regeneration of a number of large brownfield sites in the City Centre such as the former hospital site, the railway station and North Westgate.

ALTERNATIVE OPTIONS CONSIDERED

The Council was required to produce a City Centre Plan in accordance with its approved Local Development Scheme (LDS) (April 2012) and Core Strategy. The option of not producing a City Centre Plan would mean that the Council would not be working in accordance with its LDS and would not be in a position to deliver the growth and regeneration for the city centre. Therefore the alternative option of not producing the City Centre Plan was rejected.

5. STRATEGIC INFRASTRUCTURE PARTNERSHIP

In accordance with rules of procedure relating to exempt information, Cabinet agreed that it was not necessary to go into exempt session when considering item 5 in the agenda and continued the meeting in public.

Cabinet received a report following a referral from the Executive Director of Resources seeking its approval to enter into a partnership arrangement with CityFibre Holdings, referred to in the report as CFH, to enable Peterborough to meet its aspiration to provide wider access to digital services.

Councillor Seaton introduced the report highlighting that the partnership sought to future-proof high speed internet provision across the city and by doing so attract new business and investment. The provision could also change the way public services and teaching were delivered. The Executive Director of Resources added that the continued development of the city relied upon the communication infrastructure.

Cabinet debated the report and comments included:

- This would be another attraction for new businesses;
- Future delivery of cultural activities could be enhanced by this;
- This was as important for the future of the city as the railways were; and
- Many new companies were showing interest in Peterborough.

Cabinet considered the report and **RESOLVED** to:

1. Approve a strategic partnering agreement with CityFibre Holdings in order to endorse CityFibre Holdings strategy for fibre infrastructure projects in the City of Peterborough funded through private sector investment by CityFibre Holdings;

2. Authorise the Executive Director of Strategic Resources in consultation with the Cabinet Member for Resources to deliver future work streams for connectivity to the fibre network;
3. Agree to a Change Control Notice for the Council's existing ICT Managed Service Contract with Serco to enable;
 - The provision of connectivity to the Council of a dark fibre network
 - Serco to enter into a contract with CityFibre Holdings for the provision by CityFibre (at CityFibre's own cost) of a dark fibre network with connectivity
 - Serco to implement a new model of provision of the Council's current network infrastructure to a dark fibre model; and
4. Authorise the Executive Director of Strategic Resources to agree changes to the ICT Managed Service contract with Serco resulting from provision of the dark fibre network.

REASONS FOR THE DECISION

The investment in the city will further enhance the policy around the home of the environment capital, will boost the local economy through business growth and it also will generate new jobs.

ALTERNATIVE OPTIONS CONSIDERED

The Council does not enter into such an agreement and the opportunity for investment in the city and the benefits that a pure fibre network could bring to businesses and residents would be missed.

10.20 a.m.

This page is intentionally left blank

CABINET	AGENDA ITEM No. 4
18 November 2013	PUBLIC REPORT

Cabinet Member(s) responsible:	<i>Cllr Sheila Scott OBE – Cabinet Member for Children’s Services</i>	
Contact Officer(s):	<i>Wendi Ogle-Welbourn – Director for Communities</i>	Tel. 01733 863749

EARLY YEARS’ SERVICE, INCLUDING CHILDREN’S CENTRES

R E C O M M E N D A T I O N S	
FROM : Cabinet Member for Children’s Services	Deadline date : N/A
<p>It is recommended that Cabinet:</p> <ul style="list-style-type: none"> (1) Approve the proposals to begin consultation on the proposed changes to early years services including the consultation document ‘New Vision for Early Years Services Including Children’s Centres’; and (2) Cabinet agrees to receive a further report on the outcome of the consultation prior to making any decision on the delivery of the early years service including children’s centres. 	

1. ORIGIN OF REPORT

1.1 This report is submitted to Cabinet to seek its approval to go out to public consultation on a set of proposals on how early years services are provided in the future including children’s centres. It follows a review of the early years services provided by Peterborough City Council and other organisations following changes to Central Government policy on how it funds services and supports families with children aged from birth to five-years-old.

2. PURPOSE AND REASON FOR REPORT

2.1 The purpose of this report is to outline to Cabinet the key changes that are proposed within the consultation document ‘New Vision for Early Years Services including Children’s Centres’ and how the council is proposing to consult with the public and key stakeholders and to ask for the Cabinet’s approval to go out to consultation on these proposals.

2.2 This report is for Cabinet to consider under its authority to collectively deliver all strategic executive functions and lead the Council’s overall improvement programmes to deliver excellent services (*paragraph 3.2.1 part 3 section 3 Constitution*) and to take a leading role in promoting the economic, social and environmental well-being of the area (*paragraph 3.2.3 part 3 section 3 Constitution*)

3. TIMESCALE (*If this is not a Major Policy item, answer NO and delete second line of boxes*).

Is this a Major Policy Item/Statutory Plan?	NO	If Yes, date for relevant Cabinet Meeting	
---	-----------	---	--

4. STRATEGY OF CHILDREN’S CENTRES DELIVERY

4.1 The first children’s centres were opened in Peterborough in 2002 with the aim of helping families in more deprived areas to give their children the best start in life.

Over the past decade a total of 15 centres have opened across the city, offering a range of services from toy libraries to parenting classes, information on health issues and healthy eating to helping parents get into work, education or training.

The centres have played a vital role in delivering effective early childhood services to families and young children, bringing together key services such as child care, health visiting, midwifery, employment and adult learning into one place.

However since the first children's centres opened, Government policy on early year's services has changed dramatically. The Government no longer gives the council a specific pot of money to pay for children's centres, nor provides any funding for new ones. However the Government has introduced a large number of new programmes to support parents with free childcare provision, by doubling the number of health visitors in Peterborough and through other targeted programmes outlined below.

- Funding to support 15 hours free child care for two year olds in low income families (this is to be extended next year);
- Funding to support 15 hours free child care for all three and four year olds;
- Family Nurse Partnership delivering a home visiting programme for first time mothers under the age of nineteen (and dads);
- Public Health Healthy Child Programme for children, young people and families, which focuses on early intervention and prevention. It offers a programme of screening tests, immunisations, developmental reviews, information and guidance on parenting and healthy choices. It aims to identify families who need additional support or who are at risk of poor health outcomes;
- More funding directly to schools to provide before and after school activities for children;
- More funding for health visitors to support new parents (in Peterborough the number of health visitors is doubling);
- More funding for work with families who have lots of difficulties they need help with, in Peterborough our programme of work is called Connecting Families.

Alongside these service changes, in the five years to 2015/16, the Council will see a reduction in the funding we receive from Central Government of some £38m, over 46% of our grant funding. . This means that we have to look at all the services we provide to see how we can do things differently to ensure the services we are responsible for providing are having the biggest impact on improving the lives of children and families in Peterborough.

Therefore, in light of the changes in Government policy and funding and programmes for young children we have reviewed the services that all of our children's centres provide, and are proposing to consult the public on how we want to change the way they operate in the future.

Public views on these proposals are essential so we can be confident that we are moving forward in the best possible way, whilst recognising the very different and difficult financial climate we now face.

We are committed to making sure that there are a range of services that support children to have the best start in life, these includes:

- Helping children be prepared and ready for starting school;
- Offering support for parents to improve their ability to meet their parental responsibilities;
- Providing parents with opportunities to develop personal skills, access education and improve their ability to get work;
- Encouraging children and their families to develop healthy lifestyles, in order to enable children to meet their full potential and reduce health inequalities;

- Improving parent's abilities to keep their children safe.

The consultation paper outlines three key proposals which, if approved and implemented, will enable us to deliver much more targeted services to those in the greatest need of support and complementing the other newly funded services and programmes in the City.

4.2 We are seeking agreement to engage in a public consultation on the following package of proposals:-

Proposal 1: to work with partner agencies, such as health, police and housing to create a network of Super Centre Hubs across the city to serve the most deprived areas. Super Centre Hubs will offer a wider range of services to a much larger catchment area than currently provided by the existing children's centre on that site. This will enable the council to offer a collaborative approach to the delivery of services, which will in turn reduce the duplication of services and administrative functions by different agencies, as well as provide more seamless joined up services to children and families.

Proposal 2: to use some of the existing children's centres as outreach bases, these will not be open all the time and would be used for specific group work or individual targeted programmes.

Proposal 3: to change the use of or- 're-designate' the remaining centres which are serving communities where there is less need (i.e. those in areas which are less deprived). This could mean using children's centre buildings to expand schools to increase the number of school places or it could mean awarding buildings to local childcare providers to increase the number of nursery and pre-school places available.

By taking this approach we will be able to secure effective early years services for the most vulnerable children and families within the most deprived areas in Peterborough. In addition, through the creation of Super Centre Hubs we will be able to work with a range of partners both statutory agencies such as health and the police and charity and not-for-profit organisations to offer a one-stop-shop for families by bringing services together under one roof.

This in turn will reduce duplication of activity and children and families will experience more seamless service delivery. These Super Centre Hub teams will predominantly work within the given reach areas of the Super Centre but will also have the flexibility to move to other areas where additional need might be identified.

5. CONSULTATION

We have organised three public consultation events – one in each of the three localities – north, west and rural, central and east and south - as outlined in the consultation paper. There will be two sessions in each venue, one in the afternoon and one in the evening to ensure working and non-working parents can attend if they want to.

People can also take part in the consultation via the council's website and paper copies will be available from the Town Hall Reception, Bridge Street, Peterborough, the Customer Service Centre at Bayard Place, Broadway, Peterborough, at the children's centres and through GP surgeries. Copies will also be made available through pre-schools and schools.

There is also a dedicated email address childrenscentres@peterborough.gov.uk where people can send their comments.

We will also be consulting with partner organisations including, health, housing and the police as well as the Parent Adviser Groups in Children's Centres.

We will be also offering ward and parish councillors one-to-one meetings to discuss the proposals.

6. ANTICIPATED OUTCOMES

Once the consultation is over and all the responses have been considered and any amendments made, proposals will go to Cabinet for approval.

7. REASONS FOR RECOMMENDATIONS

The recommendation to consult on the proposals will ensure that we provide our residents with the opportunity to comment on the proposals, which may in turn result in us amending these prior to Cabinet on January 20 2014.

8. ALTERNATIVE OPTIONS CONSIDERED

The alternative option is to do nothing. This was rejected because the council needs to ensure the services it provides are delivering value-for-money and the review found that current provision is not targeted to those in the greatest need but are more universal services that are open to all families across the city. The proposals outlined would also enable the council to deliver more cost effective services while ensuring that vulnerable families have access to services they need for themselves and their children aged up to five-years-old.

9. IMPLICATIONS

9.1 Financial – The proposals outlined will enable the council to deliver more cost effective services while ensuring that vulnerable families have access to services they need for themselves and their children aged up to five-years-old. It is currently estimated that the proposals would save £1.2m per year. This level will need to be refined depending on consultation feedback and the final proposals considered by Cabinet, as well meeting any costs of delivering the changes.

9.2 Legal - Children's Centres are provided under section 5A Childcare Act 2006. The Council provides sufficient childcare to meet local need. What is deemed to be sufficient to meet local need is dependent upon a number of factors including the resources available to the Council. In approving these recommendations the Council is consulting on an alternative means of meeting current early years need.

Duty to consult: Under section 5D of the Childcare Act 2006 the City Council must consult before making any changes to the services provided through existing children's centres. The consultation document must set out clearly what the proposals are and must be for a reasonable period. A 6 week consultation period is broadly in line with other Councils' consultation on similar proposals. Consultation is not a negotiation or an issues paper but a process within which the City Council at a formative stage in the decision-making process, invites representations on one or more possible courses of action. The decision being asked of the Cabinet is to begin consultation, the outcome of which is to be considered by Cabinet following closure of the consultation to decide if these proposals meet the Council's statutory responsibilities.

Equality Impact Assessment: Peterborough City Council must consider and comply with the Equality Act 2010, and when making decisions of a strategic nature about how it exercises its functions and must have due regard to the desirability of exercising its functions in a way that is designed to reduce the inequalities of outcomes. The Council has considered the possible impact of the proposals as set out in the consultation document and has carried out an Equality Impact Assessment which has provided an analysis of all the potential effects and possible impacts on the relevant community. The conclusions of the Equality Impact Assessment has led to the proposed consultation. The Council is therefore seeking

to ensure that it complies with the Act. Equality issues will also be considered prior to a final decision being taken.

The Council operates the Children's Centres through contracts and leases with various providers. Two contracts are held externally by Spurgeons (North West and Rural Locality and South Locality) and one is held by Barnardos (Central Locality). These contracts are financed by non-ring fenced external grants. These providers will be consulted as part of the process. There are a further three internal agreements for services operated by staff who will also be consulted on the proposals. Any impacts upon persons arising out of these proposals can be addressed once the outcome of the consultation is known.

10. BACKGROUND DOCUMENTS

Consultation Documents

This page is intentionally left blank

Children's Services

Formal Consultation Paper:

New Vision for Early Years Services including Children's Centres in Peterborough

November 2013

Foreword

The first children's centres opened in Peterborough in 2002 with the aim of helping families in more deprived areas to give their children the best start in life.

Over the past decade 15 centres have opened across the city, offering a range of services from toy libraries to parenting classes, information on health issues and healthy eating to helping parents get into work, education or training.

The centres have played a vital role in delivering effective early childhood services to families and young children, bringing together key services such as child care, health visiting, midwifery, employment and adult learning into one place.

Since the first children's centres opened Government policy on early years services has changed dramatically.

The Government no longer gives the council a specific pot of money to pay for children's centres nor provides any funding for new ones. At the same time the Government introduced a number of other ways to support families including:

- Funding for 15 hours free childcare for two-year-olds in low income families (this is to be extended next year);
- Funding for 15 hours free childcare for all three and four-year-olds;
- A Family Nurse Partnership which delivers a home visiting programme for first time mothers and fathers under the age of 19;
- A Public Health Healthy Child Programme for children, young people and families, which focuses on early intervention and prevention. It offers a programme of screening tests, immunisations, developmental reviews, information and guidance on parenting and healthy choices. It aims to identify families which need additional support or who are at risk of poor health;
- More funding directly to schools to provide before and after-school activities for children;
- More funding for health visitors to support new parents (in Peterborough the number of health visitors is doubling);
- More funding for the Troubled Families programme (known as the 'Connecting Families' programme in Peterborough) which works with families who have lots of complex issues.

Alongside these service changes, in the five years to 2015/16, the Council will see a reduction in the funding we receive from Central Government of some £38m, over 46% of our grant funding. This means that we have to look at all the services we provide to see how we can do things differently to ensure the services we are responsible for are having the biggest impact on improving the lives of children and families in Peterborough.

In light of the changes in Government policy and the new funded services and programmes for young children, we have reviewed the services that all of our children's

centres provide, and this consultation document outlines how we are proposing to change the way they operate in the future. Your views on these proposals are essential so we can be confident that we are moving forward in the best possible way, whilst recognising the very different and difficult financial climate we now face.


We are committed to making sure that there are a range of services that help children to have the best start in life. These services include:

- Helping children be prepared and ready for starting school;
- Offering support for parents to improve their ability to meet their parental responsibilities;
- Providing parents with opportunities to develop personal skills, access education and improve their ability to get work;
- Encouraging children and their families to develop healthy lifestyles, in order to enable children to meet their full potential and reduce health inequalities;
- Improving parent's abilities to keep their children safe.

This consultation paper outlines three key proposals which, if approved and implemented, will enable us to deliver much more targeted services to those in the greatest need of support. These proposals will also complement other newly-funded children's services and programmes in the city.

It is important that we deliver early childhood services in the most efficient and effective way and make maximum use of all resources, including buildings and facilities. These proposals set out how resources can be more focused on delivering services for children and families.

We would like to hear what you think about the proposals outlined in this Consultation Paper. If you have any comments on the proposals, or would like to make any alternative suggestions, please submit your comments before the consultation closes at **5pm on Wednesday 8 January 2014**. If you require any further information, please contact us.



Cllr Sheila Scott
Cabinet Member for
Children's Services



Sue Westcott
Executive Director,
Children's Services

Contents

1 Overview	5
1.1 What is a Children’s Centre?	5
1.2 What are we consulting on and why?	5
1.3 The vision for early years services, including children’s centres in Peterborough	6
1.4 Summary of proposals	6
1.5 Public consultation events	6
1.7 What happens after the consultation?	8
2 Definitions	8
2.1 Key definitions	8
3 Background	9
3.1 Children’s Centre Provision	9
3.2 Proposals	9
3.2.1 What did the Council consider when developing the proposals?	9
3.2.2 What is being proposed?	10
3.2.3 Why is this approach being proposed?	10
4 What criteria were used to determine how the children’s centres will be used in the future?	11
4.1 Assessment criteria	11
5 Proposal details	12
5.1 Super Centre Hubs	12
5.2 Bringing together services	12
5.3 Re-designation of Children’s Centres in least deprived areas	13
5.4 Proposed changes to Children’s Centres	14
Appendix A: Assessment of Existing Children’s Centres	17
Appendix B: Locality Map – attached	
Appendix C: Map of Proposals for Peterborough Children’s Centres - attached	

1 Overview

1.1 What is a Children's Centre?

Children's centres provide a place where families with children under five years old can access a range of early years support services.

Services may be provided directly by the children's centre, may be delivered by other organisations in the children's centre building, or may be delivered elsewhere, such as a family's home. There are currently 15 registered children's centres in Peterborough.

Children's centres have been developed in line with the needs of the local community so no single children's centre is the same. Services provided by children's centres include:

- Access to nursery/ pre-school provision
- Health services for young children, parents and expectant parents
- Training and employment services to assist parents and expectant parents
- A range of programmes about specific parenting issues e.g. behaviour management, parental bonding, healthy lifestyles
- Advice, information and guidance services for parents and expectant parents

1.2 What are we consulting on and why?

Since the first children's centres opened in Peterborough in 2002, Government policy on supporting families and young children has changed.

The Government no longer gives the council a specific pot of money to pay for children's centres or provides any funding for new ones.

At the same time the Government introduced a number of other ways to support families.

Over the past five years the city council will have seen a 43 per cent reduction in the funding we receive from Central Government. This means that we have to look at all the services we and others provide to see how we can do things differently. We need to ensure the services we are responsible for are having the biggest impact on improving the lives of children and families in Peterborough.

Therefore, in light of the changes in Government policy, we have reviewed the services that all of our children's centres provide, and taken into consideration the

newly-funded services and programmes: this consultation document outlines how we are proposing to change the way children's centres operate in the future.

The proposals outlined will enable the council to deliver more cost effective services while ensuring that vulnerable families have access to services they need for themselves and their children aged up to five-years-old. It is currently estimated that the proposals would save £1.2m per year..

1.3 The vision for early years services, including children's centres in Peterborough

We want to ensure the provision of high quality services which enable every child to get a healthy and safe start in life and be ready for when they start school. We want to ensure support for parents, to improve their ability to meet their parenting responsibilities.

1.4 Summary of proposals

Given the extended choice of early years services available to parents, as well as a reduction in the funding which the city council receives from Government, we consider that the best way to realise our vision is to:

- Create a network of large Super Centre Hubs across the three localities – Central and East, North, West and Rural and South - which will offer a wider variety of services.
- Create outreach children's centres in some of the existing children's centre buildings to support the Super Centre Hubs.
- Change the use of -'re-designate' some of the existing children's centre buildings, to provide additional nursery and pre-school places for example.

This means that some children's centre services in your community may no longer be delivered from the same buildings that they currently are, especially if you live in less deprived areas. However you will have access to other Government funded programmes such as free childcare and health programmes, and outreach services will be available to individual families in greatest need.

More details on page 12.

1.5 Public consultation events

The following public consultation meetings are planned during the consultation period:

- Tuesday 26 November: from 2pm to 4pm and 6pm to 8pm, at The Fleet, Fletton High Street, Peterborough, PE2 8DL
- Friday 29 November: from 1.30pm to 3.30pm and 4pm to 6pm at The Cresset, (The Gallery Suite), Rightwell, Bretton, Peterborough, PE3 8DX
- Monday 2 December: from 2pm to 4pm and 6pm to 8pm, at The John Mansfield Campus, Western Avenue, Dogsthorpe, Peterborough, PE1 4HX

1.6 How to comment on the vision and proposals

You are able to submit comments on this consultation document, specifically on the vision and proposals outlined by either:

1) **Completing the online consultation:** www.peterborough.gov.uk

2) **Completing a consultation form:**

- Available to download online www.peterborough.gov.uk
- Paper copies will also be available at:
 - consultation events;
 - Town Hall reception (Bridge Street, Peterborough)
The Customer Service Centre at Bayard Place
(Broadway, Peterborough)
- You can also request a paper copy by emailing childrenscentres@peterborough.gov.uk or calling 01733 864500

The consultation form can be returned via:

Post: Early Years Child Intervention Team
0-19 Service
Peterborough City Council
FREEPOST NAT7922
Peterborough
PE1 1BR

Email (scan and return) to: childrenscentres@peterborough.gov.uk

Drop box: you can deposit the questionnaire in one of the drop boxes at one of the various consultation events (as detailed on page 6).

All comments (paper and online) must be received by 5pm on Wednesday 8th January 2014. Comments received after this time cannot be considered.

If you have any queries on how to submit comments, please contact us on 01733 864500 between the hours of 9am to 5pm, Monday to Friday.

1.7 What happens after the consultation?

Once the consultation has closed on **Wednesday 8th January 2014**, all comments will be reviewed by Peterborough City Council. The comments will be carefully considered and taken into account before we finalise the vision and proposals for Children's Centres in Peterborough.

2 Definitions

2.1 Key definitions

A variety of terms and key words are used throughout this consultation paper. These are defined below for clarity.

Deprivation	The damaging lack of material benefits considered to be basic necessities in a society.
Super Centre Hub	The physical base for the location of a variety of services from various agencies and organisations who have a remit to work with children and families.
Re-designation	Refers to change in the way a building delivers a service or a change to the services delivered from the premises.
Locality	Refers to one of three geographical areas in Peterborough; Central and East Locality, North, West and Rural Locality and South Locality.

3 Background

3.1 Children's Centre Provision

In May 2010, Government policy on supporting families with children aged from birth to five years changed. The focus moved from providing children's centres which support all families and children, to a more targeted approach aimed at giving a wider variety of support to those families and children in greatest need.

This change was reflected in an increase in Government funding to support access to free childcare for two-year-olds for the most vulnerable families and free child care for all three and four-year-olds. Furthermore, there was an increase in health visitors to ensure the delivery of the Healthy Child Programme and Family Nurse Partnership, and the Troubled Families programme was established which aims to support the most vulnerable families.

The above, combined with an overall reduction in council funding from Government, has meant that children's services departments across the country are reviewing the services they deliver and focusing their reduced resources on supporting the most vulnerable children and families, as well as continuing to support other providers of early years services.

3.2 Proposals

3.2.1 What did the Council consider when developing the proposals?

The following factors and aims were taken into consideration during the development of the proposals in order to identify a viable solution:

- The importance of ensuring that we give support to those children and families who need it most;
- The importance of continuing to support childcare settings to support the development of children so they are ready for school;
- The differences that exist across the city, with particular focus on the number of children under five years old and the local deprivation in communities;
- The different ways services are and could be run in the community;
- What the law requires us to do;
- The possibility of developing local service hubs which are centres that offer a wider range of services from a range of organisations and partners who work together (such as health, housing, education, employment services and police);
- How opportunities to improve coordination and access to a range of services for families where at least one child in the family is under five-years-old could be improved.
- The need to deliver savings of £1.2m whilst ensuring a range of services would still be in place to give children the best start in life;

3.2.2 What is being proposed?

Currently there are 15 children's centres. They are:

North West and Rural Locality: Bretton; Caverstede; East Rural (Eye and Thorney); Paston (Honeyhill); Werrington; West Rural (Wittering); and Westwood and Ravensthorpe

Central and East Locality: East; Gladstone; First Steps; and Fulbridge

South Locality: Brewster Avenue; Hampton; Orton and Stanground

Our review has looked at all of the services these centres provide and these proposals outline how we plan to change the way we use all of our children's centre buildings in the future.

Proposal 1: to work with partner agencies, such as health, police and housing to create a network of Super Centre Hubs across the city to serve the most deprived areas. Super Centre Hubs will offer a wider range of services to a much larger catchment area than currently provided by the existing children's centre on that site. This will enable the council to offer a collaborative approach to the delivery of services, which will in turn reduce the duplication of services and administrative functions by different agencies, as well as provide more seamless joined up services to children and families.

Proposal 2: to use some of the existing children's centres as outreach bases, these will not be open all the time and would be used for specific group work or individual targeted programmes.

Proposal 3: to change the use of 're-designate' the remaining centres which are serving communities where there is less need (i.e. those in areas which are less deprived). This could mean using children's centre buildings to expand schools to increase the number of school places or it could mean awarding buildings to local childcare providers to increase the number of nursery and pre-school places available.

3.2.3 Why is this approach being proposed?

By taking this approach we will be able to secure effective early years services for the most vulnerable children and families within the most deprived areas in Peterborough. In addition, through the creation of Super Centre Hubs we will be able to work with a range of partners both statutory agencies such as health and the police and charity and not-for-profit organisations to offer a one-stop-shop for families by bringing services together under one roof.. This in turn will reduce duplication of activity and children and families will experience more seamless service delivery. These Super Centre Hub teams will predominantly work within the given reach areas of the Super Centre but will also have the flexibility to move to other areas where additional need might be identified.

4 What criteria were used to determine how the children's centres will be used in the future?

4.1 Assessment criteria

To deliver the proposals outlined in 3.2.2, we had to identify:

- a) Which existing children's centres could become Super Centre Hubs
- b) Which existing children's centres could operate as outreach centres to the Super Centre Hubs
- c) Which children's centres could be re-designated to meet demand for additional nursery, pre-school and school places

The following briefly outlines the assessment approach that we used to determine the above. Further details of this assessment are outlined in Appendix A.

Step 1: Ensuring provision in each locality

Based on the fact that children's centres are currently based in three localities - Central and East; North, West and Rural; and South (see Appendix B for map of locality areas) - it is considered appropriate to establish (in existing premises) at least one Super Centre Hub within each of these three localities. It is expected that each Super Centre Hub will serve approximately 1,000 to 1,500 children in a locality.

Step 2: Deprivation assessment

Within the reach (catchment) area of each centre, the number and proportion of children under five years old living in areas of deprivation was identified and considered. Both the number and percentage were graded using a 'traffic light' scoring system (see Appendix A, Criteria A and B).

In instances where the existing children's centre reach area has low levels of deprivation (i.e. where the children's centre was graded 'green' for both Criteria A and B) then these children's centres were automatically proposed for re-designation. This means the building's suitability to serve as a Super Centre Hub (Criteria C) was not considered as the aim is to locate Super Centre Hubs in areas where there is high levels of deprivation to enable them to work with those families who have greatest need.

Step 3: Building suitability

For the remaining existing children's centres, the building's potential to be used as a Super Centre Hub, specifically its suitability in terms of size and facilities, was considered. Within each locality, the buildings with the greatest potential to bring together services and multiple functions are proposed as Super Centre Hubs.

Step 4: Identification of outreach centres

The remaining children's centres (i.e. those not proposed as either Super Centre Hubs or for re-designation because of being in an area of low deprivation) were then assessed.

For each locality, if the number of children living within the top 30% of deprivation (based on the Income Deprivation Affecting Children Index) is 2,000 or more, an outreach centre is proposed (i.e. if there were 4,000 children meeting the above criteria, two outreach centres would be sought within the locality). In instances where there is need for only one outreach centre (i.e. the total number of children living within the top 30% of deprivation across the locality is approximately 2,000) a decision was made as to which existing children's centre would be most suited and needed, based on deprivation statistics.

Step 5: Remaining centres

It is proposed that any remaining children's centres which were not allocated under Step 3 or 4 are re-designated.

5 Proposal details

5.1 Super Centre Hubs

The Super Centre Hubs will provide the physical base to bring together a variety of services from various agencies and organisations who have a remit to work with children and families. Under the new Ofsted Framework for the Inspection of Children's Centres, in order to achieve an Ofsted judgment of 'Outstanding', children centre programmes should aim to engage more than 79 per cent of the identified most vulnerable families in the reach areas. The implication of this is that a significant proportion of the work delivered through Super Centre Hubs will have to be based on proactive outreach activity, engaging with vulnerable communities within specific wards and streets and providing services that directly respond to their identified family needs.

Evidence through referrals to Children's Services and the Connecting Families programme indicates that the most vulnerable children and families in Peterborough reside within the Central and East wards of the city. In the Central and East locality, the four existing centres would operate as either Super Centre Hubs or an outreach centres, also providing more targeted outreach to vulnerable communities in specific streets and wards.

5.2 Bringing together services

Creating Super Centre Hubs would allow us to bring together a wide range of professionals from different organisations, including health, the council and the voluntary sector to work together as one team. This would enable all organisations to ensure that the services they provide to the most vulnerable children and families are more cost effective and efficient, as well as providing more seamless and joined up services. This will become particularly important in light of the prospect of further year-on-year cost savings being required from all organisations and agencies.

5.3 Re-designation of Children's Centres in least deprived areas

There are two potential options for centres that are to be re-designated. The first is a re-allocation of the physical resource into the school estate with the view to using the space to support increased provision in the reception years. The second option is to allocate the facilities to local childcare providers in order to extend capacity to deliver two, three and four year old funded childcare.

However, we propose that the Rural West (Wittering) and Caverstede Children's Centres would be exceptions to the above two options, for the following reasons:

Rural West (Wittering)

Wittering Children's Centre forms part of Wittering Primary School. While there are no children who are 'most' deprived, the children's centre provides valuable support to the service families currently based at RAF Wittering.

The proposal for the future of this centre is to help the school to establish a community interest company/charitable organisation in order to continue operating as a support centre for families. We will continue to work with the school to access funding to support targeted work with the families on the base through the Military Covenant grant.

Caverstede

Over the years staff at Caverstede have developed significant expertise in supporting children and families where there are special needs or where Children's Social Care is involved. The proposal is to work with Caverstede to continue to provide tailored support for vulnerable families, providing some resources to deliver services to a targeted group of children and families. The existing nursery school that shares the current site is expected to continue running as normal.

5.4 Proposed changes to Children's Centres

LOCALITY	WHAT IS PROPOSED?	REASON FOR PROPOSAL (INCLUDING POSSIBLE FUTURE USE OF BUILDING IF APPLICABLE)
North, West and Rural Locality		
Bretton Children's Centre	Venue to operate as an outreach to the Super Centre Hub	Bretton serves an area with high levels of deprivation. The site is a relatively small site in comparison with the Paston site and therefore the site is not suitable as a Super Centre Hub. However it is proposed that this building operates as an outreach centre, serving this locality. Deprivation is higher than the Ravensthorpe area and therefore this site is preferred for outreach provision.
Caverstede Children's Centre	Re designation of the centre	Caverstede does not serve an area with the highest level of deprivation. As the centre has developed a high level of expertise in supporting children with special needs and those families known to children's services, it is proposed that this centre be funded to continue to deliver targeted support in these areas. The site could also continue to deliver the nursery provision that currently operates.
East Rural Children's Centre (based in Eye and Thorney)	Re designation of the centre	East Rural does not service an area with the highest level of deprivation. This building could potentially be used for the delivery of additional pre-school provision, or taken on by the schools for wider school services.
Paston (Honeyhill) Children's Centre	Developed as a Super Centre Hub	Paston has high levels of deprivation in the North, West and Rural locality. There are other high levels of need in this community and whilst the Super Centre Hub will be based in the Honeyhill centre, outreach provision would be made available to the Bretton and Ravensthorpe communities, who need most support. The building is the largest of the children's centres in this locality and therefore offers the most potential for

		expanded use.
Werrington Children's Centre	Re designation of the centre	Werrington does not service an area with the highest level of deprivation. The site could potentially become part of the school and discussions are being held with the school.
West Rural (Wittering) Children's Centre	Re designation of the centre	Rural West does not serve an area with the highest levels of deprivation. There is potential for this centre to provide support to families, particularly those from the air base, by developing a community interest company. This option is being explored by the school and supported by the city council.
Westwood and Ravensthorpe Children's Centre (based at Highlees Primary School)	Re designation of the centre	<p>Ravensthorpe serves an area of high deprivation.</p> <p>However the site is a relatively small site in comparison with the Paston site and the deprivation levels are lower than in the Bretton reach area. Therefore the site is not proposed for either a Super Centre Hub or an outreach centre.</p> <p>The Ravensthorpe Centre provision is predominantly delivered from the Highlees Primary School site. The site could potentially be reinstated by the school to increase the number of school places available locally.</p>
Central and East Locality		
East Children's Centre	Developed as a Super Centre Hub	<p>East is in an area of high deprivation.</p> <p>The building has the capacity to become a Super Centre Hub.</p>
First Steps Children's Centre	Developed as a Super Centre Hub	<p>First Steps is in an area of high deprivation.</p> <p>The building has the capacity to become a Super Centre Hub.</p>
Fulbridge Children's Centre	Venue to operate as an outreach to the Super Centre Hub	<p>Fulbridge is in an area of high deprivation.</p> <p>The building would not be suitable as a Super Centre Hub, but will be used for outreach.</p>
Gladstone Children's Centre	Venue to operate as an outreach to the Super Centre Hub	<p>Gladstone is in an area of high deprivation. The centre services are delivered from the local centre as well as from Gladstone Primary School. Both facilities, whilst not suitable as</p>

		Super Centre Hubs due to their size and layout, will be retained as outreach provision to a Super Centre Hub.
South Locality		
Brewster Avenue Children's Centre	Re designation of the centre	<p>Brewster Avenue does not serve an area with high levels of deprivation.</p> <p>The school has shown an interest in providing services from this building. We will work with the school to directly manage the building. The after-school provision could be maintained as well as possible continued use for health provision. Other preschool services could also be explored in partnership with the school.</p>
Hampton Children's Centre	Re designation of the centre	<p>Hampton does not serve an area with the highest deprivation.</p> <p>There is a need for increased preschool places in Hampton. The building could therefore be used for preschool expansion.</p>
Orton Children's Centre	Developed as a Super Centre Hub	<p>Orton has the highest level of deprivation in the South locality.</p> <p>The building is large enough to house other agencies and organisations who work with children and families.</p>
Stanground Children's Centre	Re designation of the centre	<p>Stanground does not serve an area with the highest level of deprivation.</p> <p>The building could be used for a base for the Portage Service (this provides services for children with special needs). Some health provision could be continued from this base.</p>

Appendix A: Assessment of Existing Children's Centres

The assessment approach used to determine which centres should be proposed as 'Super Centre Hubs', which should be proposed as outreach centres to serve the Super Centre Hubs, and which should be proposed for re-designation is outlined below.

Step 1: Ensuring provision in each locality

Based on the fact that children's centres are currently based in three localities - Central and East; North, West and Rural; and South (see Map at Appendix B for locality areas) - it is considered appropriate to establish (in existing premises) at least one Super Centre Hub within each of these three localities.

Step 2: Deprivation assessment

Within the reach (catchment) area of each centre, the number and proportion of children under five years old living in areas of deprivation was identified and considered. Both the number and percentage were graded using a 'traffic light' scoring system.

The colour coding system has been applied against each criteria as so:

Criteria A) Proportion of children living in the top 30 areas of deprivation (based on IDACI) (Red = 76- 100 percent; Amber= 51- 75 percent; Green=0- 50 percent)

Criteria B) Total estimated number of children under 5 years old living in the 30 percent most deprived areas (Red= over 1000; Amber= 500 – 999; Green= 499 or fewer children affected)

In instances where the existing children's centre reach area has low levels of deprivation (i.e. where the children's centre was graded 'green' for both Criteria A and B) then these children's centres were automatically proposed for re-designation i.e. the suitability of the building to serve as a Super Centre Hub (Criteria C) was not considered in light of the aim to target services at those who have greatest need.

Step 3: Building suitability

For the remaining existing children's centres, the building's potential to be used as a Super Centre Hub, specifically its suitability in terms of size and facilities, was considered- Criteria C. Within each locality, the buildings with the greatest potential to co-locate services and multiple functions are therefore proposed as Super Centre Hubs.

Step 4: Identification of outreach centres

The remaining children's centres (i.e. those not proposed as either Super Centre Hubs or for re-designation because of being in an area of low deprivation) were then assessed.

For each locality, if the number of children living within the top 30 percent of deprivation (based on the Income Deprivation Affecting Children Index) is 2,000 or more, an outreach centre is proposed (i.e. if there were 4,000 children meeting the above criteria, two outreach centres would be sought within the locality). In instances where there is need for only one outreach centre (i.e. the total number of children living within the top 30 percent of deprivation across the locality is approximately 2,000) a decision was made as to which existing children's centre would be most suited and needed, based on deprivation statistics.

Step 5: Remaining centres

It is proposed that any remaining children's centres which were not allocated under Steps 2, 3 or 4 are re-designated.

Note:

The total number of children under 5 years old within each children's centre catchment area has been shown for information only and has not been used as a criteria during this assessment.

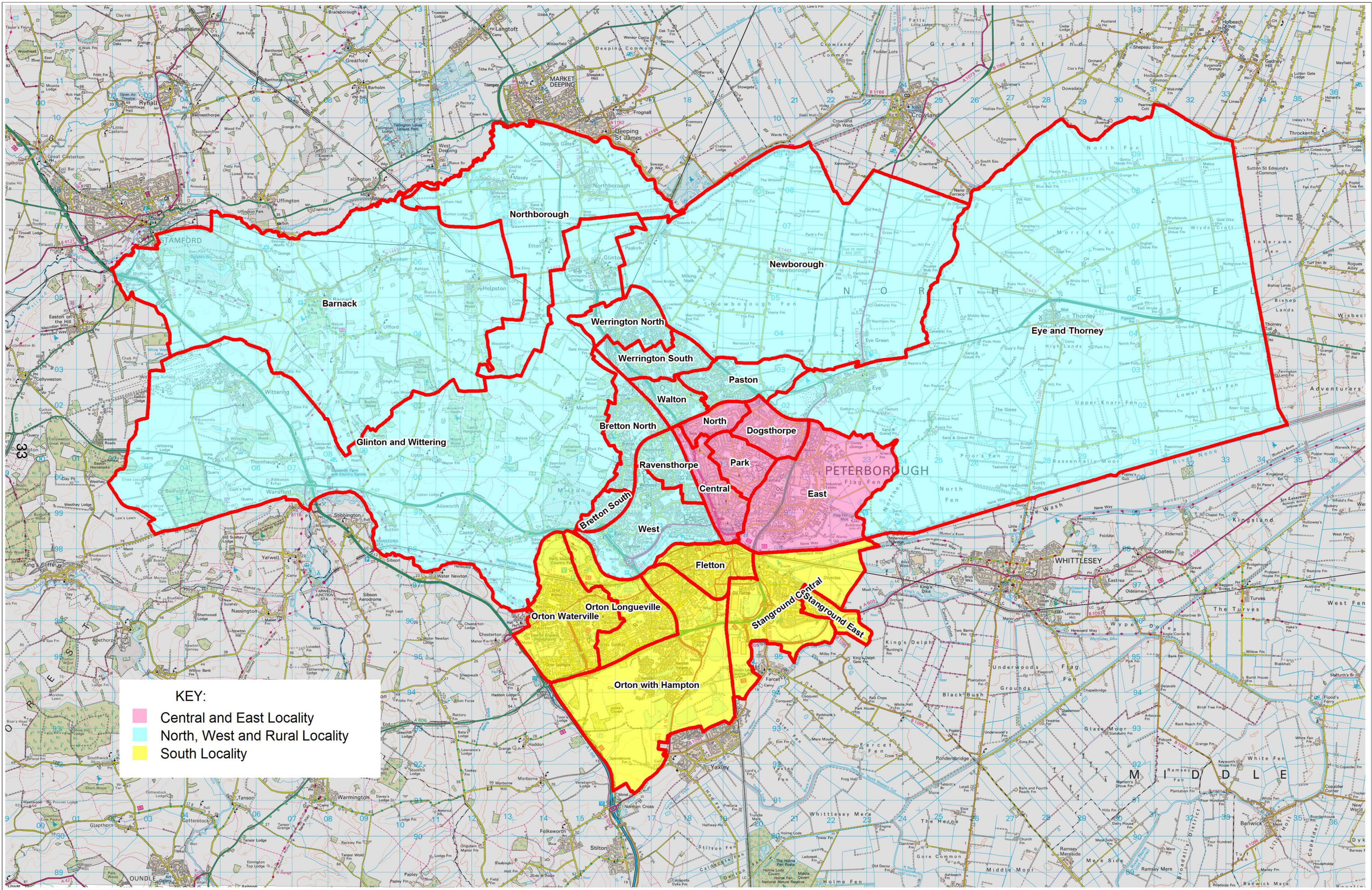
CHILDREN'S CENTRE	INFO	CRITERIA			PROPOSAL
	Total number of children under 5 years in children's centre area	A) Proportion of children under 5 years living in top 30 percent area of deprivation	B) Estimated number of children under 5 years living in top 30 percent area of deprivation	C) Building suitability for Super Centre Hub	

NORTH, WEST AND RURAL LOCALITY					
Bretton Children's Centre	997	84%	837	This building, based at Watergall Primary, has more limited facilities than Paston Children's Centre.	Venue to operate as an outreach facility to the Super Centre Hubs: Bretton Children's Centre is proposed as an outreach centre over the Westwood and Ravensthorpe Children's Centre due to the higher levels of deprivation within the Bretton locality.
Caverstede Children's Centre	403	26%	93	The building is not located in an area of high need and therefore has not been considered for a Super Centre Hub.	Building re-designated.
East Rural Children's Centre (based in Eye and Thorney)	556	23%	128	The building is not located in an area of high need and therefore has not been considered for a Super Centre Hub.	Building re-designated.
Paston (Honeyhill) Children's Centre	692	82%	567	The building itself is the most suitable from which to deliver a Super Centre Hub within this locality.	Developed as a Super Centre Hub.
Werrington Children's Centre	658	25%	164	The building is not located in an area of high need and therefore has not been considered for a Super Centre Hub.	Building re-designated.
West Rural (Wittering) Children's Centre	410	0	0	The building is not located in an area of high need and therefore has not been considered for a Super Centre Hub.	Building re-designated.
Westwood and Ravensthorpe Children's Centre (based at Highlees Primary School)	1313	60%	788	The building, based at Highlees Primary, has more limited facilities than Paston Children's Centre.	Building re-designated: Bretton Children's Centre is proposed as an outreach centre over the Westwood and Ravensthorpe Children's Centre due to the higher levels of deprivation within the Bretton locality.

CENTRAL AND EAST LOCALITY					
East Children's Centre	1100	100%	1100	Provides reasonable sized office accommodation that could house multi agency teams.	Developed as a Super Centre Hub
First Steps Children's Centre	858	100%	858	Provides reasonably sized office accommodation that could house multi agency teams.	Developed as a Super Centre Hub
Fulbridge Children's Centre	1455	70%	1018	Limited size: no office provision to accommodate a multi agency team.	Venue to operate as an outreach facility to the Super Centre Hubs
Gladstone Children's Centre	1356	100%	1356	Limited size: no office provision to accommodate a multi agency team.	Venue to operate as an outreach facility to the Super Centre Hubs

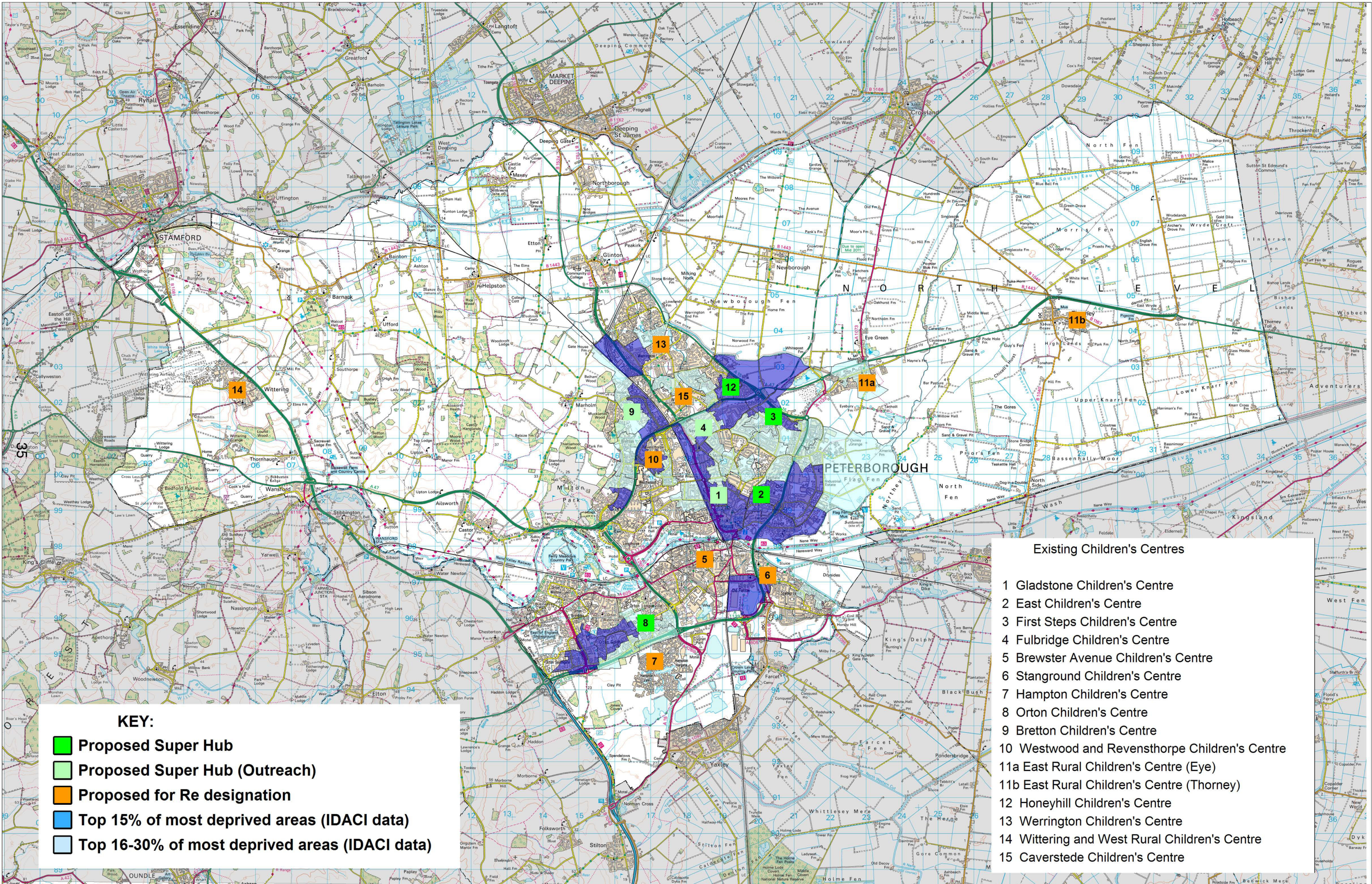
SOUTH LOCALITY					
Brewster Avenue Children's Centre	898	0%	0	The building is not located in an area of high need and therefore has not been considered for a Super Centre Hub.	Building re-designated.
Hampton Children's Centre	1322	0%	0	The building is not located in an area of high need and therefore has not been considered for a Super Centre Hub.	Building re-designated.
Orton Children's Centre	1318	66%	870	The building has office accommodation that could potentially be developed to enable delivery as a Super Centre Hub.	Developed as Super Centre Hub.
Stanground Children's Centre	512	37%	189	The building is not located in an area of high need and therefore has not been considered for a Super Centre Hub.	Building re-designated.

This page is intentionally left blank



KEY:
 [Pink Box] Central and East Locality
 [Light Blue Box] North, West and Rural Locality
 [Yellow Box] South Locality

This page is intentionally left blank



KEY:

- Proposed Super Hub
- Proposed Super Hub (Outreach)
- Proposed for Re designation
- Top 15% of most deprived areas (IDACI data)
- Top 16-30% of most deprived areas (IDACI data)

- Existing Children's Centres**
- 1 Gladstone Children's Centre
 - 2 East Children's Centre
 - 3 First Steps Children's Centre
 - 4 Fulbridge Children's Centre
 - 5 Brewster Avenue Children's Centre
 - 6 Stanground Children's Centre
 - 7 Hampton Children's Centre
 - 8 Orton Children's Centre
 - 9 Bretton Children's Centre
 - 10 Westwood and Revensthorpe Children's Centre
 - 11a East Rural Children's Centre (Eye)
 - 11b East Rural Children's Centre (Thorney)
 - 12 Honeyhill Children's Centre
 - 13 Werrington Children's Centre
 - 14 Wittering and West Rural Children's Centre
 - 15 Caverstede Children's Centre

This map is reproduced from or based upon Ordnance Survey material with the permission of Ordnance Survey on behalf of the Controller of Her Majesty's Stationery Office © Crown copyright. Unauthorised reproduction infringes Crown copyright and may lead to prosecution or civil proceedings. Peterborough City Council. 100024236.2012.

This page is intentionally left blank